

20240501-20240630



Oil Pattern Distance: 43 Feet	Reverse Brush Drop: 40 Feet	Oil Per Board: 35 uL
Forward Oil Total: 15.225 mL	Reverse Oil Total: 11.48 mL	Volume Oil Total: 26.705 mL
Forward Boards Crossed: 435 Boards	Reverse Boards Crossed: 328 Boards	Total Boards Crossed: 763 Boards

	Start	Stop	Loads	Speed	Crossed	Start	End	Feet	T.Oil
1	3L	3R	1	10	35	0.0	0.0	0.0	1225
2	5L	5R	1	10	31	0.0	1.4	1.4	1085
3	7L	7R	2	10	54	1.4	4.2	2.8	1890
4	8L	8R	3	10	75	4.2	8.4	4.2	2625
5	9L	9R	4	14	92	8.4	16.3	7.9	3220
6	10L	10R	2	14	42	16.3	20.2	3.9	1470
7	10L	10R	2	18	42	20.2	25.3	5.1	1470
8	12L	12R	3	22	51	25.3	34.6	9.3	1785
9	14L	14R	1	22	13	34.6	37.7	3.1	455
10	2L	2R	0	26	0	37.7	43.0	5.3	0

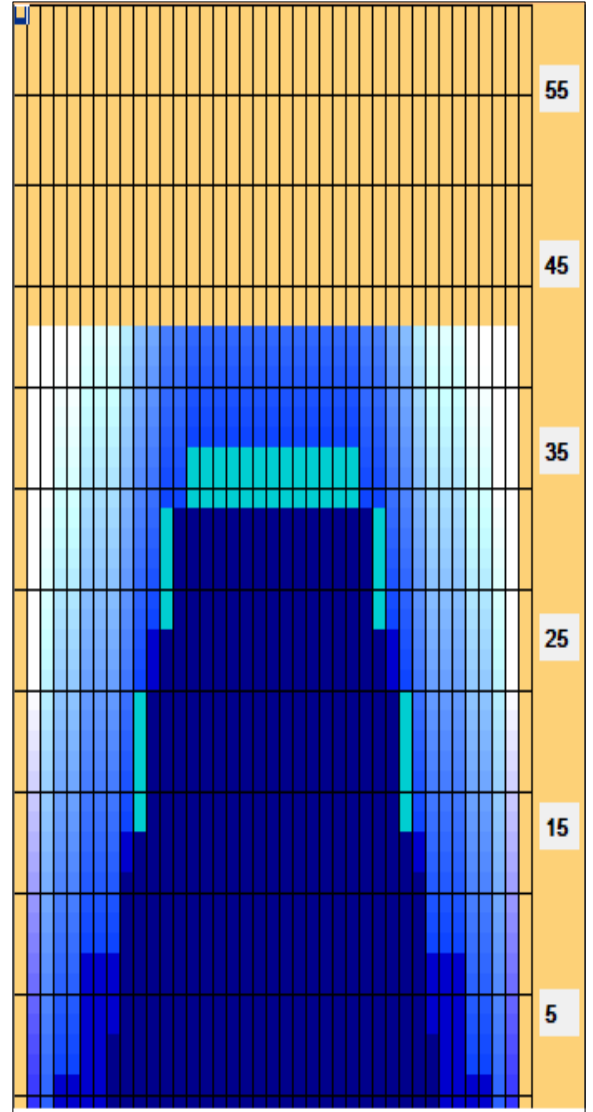
Navigation: Forward Reverse More

	Start	Stop	Loads	Speed	Crossed	Start	End	Feet	T.Oil
1	2L	2R	0	26	0	43.0	34.0	-9.0	0
2	13L	13R	2	22	30	34.0	27.8	-6.2	1050
3	11L	11R	4	18	76	27.8	17.6	-10.2	2660
4	9L	9R	3	14	69	17.6	11.7	-5.9	2415
5	6L	6R	3	14	87	11.7	5.8	-5.9	3045
6	4L	4R	2	10	66	5.8	3.0	-2.8	2310
7	2L	2R	0	10	0	3.0	0.0	-3.0	0

Navigation: Forward Reverse More

Conditioner:
Type In or Select One

TransferType:
Type In or Select One



This Pattern Up Loaded From Slot # 3 In Lane Machine On 2023/02/17 16:13

Item	3L-7L:18L-18R	8L-12L:18L-18R	13L-17L:18L-18R	18L-18R:17R-13R	18L-18R:12R-8R	18L-18R:7R-3R
Description	Outside Track:Middle	Middle Track:Middle	Inside Track:Middle	Middle: Inside Track	Middle:Middle Track	Middle:Outside Track
Track Zone Ratio	6.88	1.49	1.01	1.01	1.49	6.88

